

## The Theatre School, DePaul University

<b>Location</b>	Chicago, Illinois
<b>Total Area</b>	165,000 square feet
<b>Date of Completion</b>	2013
<b>Seats</b>	Thrust Theater: 250 Black Box Theater: 100
<b>Design Team</b>	Cesar Pelli, FAIA, JIA, RIBA Senior Design Principal Fred Clarke, FAIA, JIA, RIBA Senior Design Principal Mitchell Hirsch, AIA, LEED AP Design Team Leader Gina Narracci, AIA Project Architect Katy Harp Designer

The new Theatre School will be a gateway to DePaul University's Lincoln Park campus. Used for both instruction and performance, the building will welcome students, faculty and staff during the day and theatergoers at night. Emphasizing openness and transparency, the building puts the excitement of a theater education on view for the neighborhood.

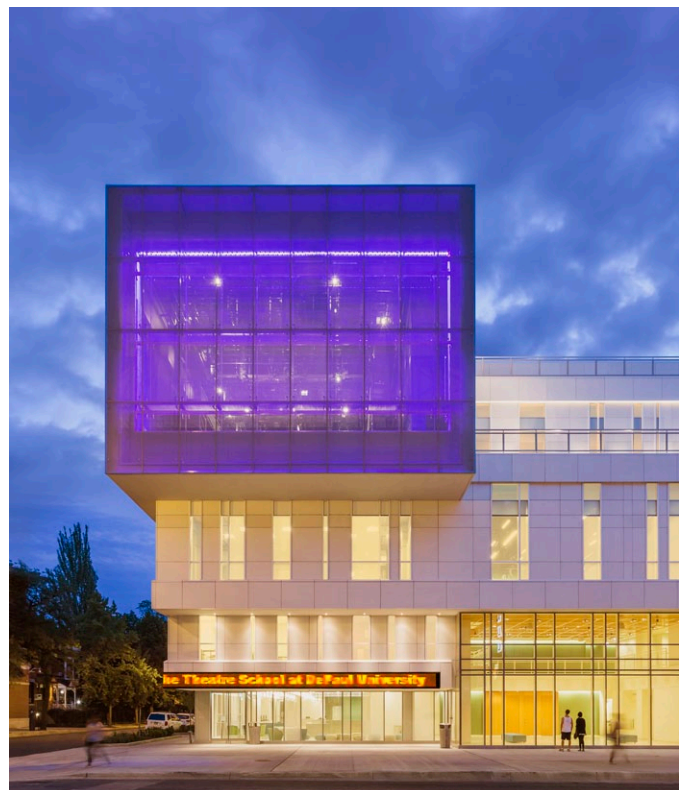
The five-story building is a composition of rectangular forms clad in limestone, translucent glass and transparent glass. Projecting from the building at the corner of Racine and Fullerton is the flexible theater, serving as a sign for the university. The north façade softly glows at night, a beacon for the Theatre School. Similar to a scrim, the translucent glass wall can reveal the 100-seat theater behind it.

Behind-the-scenes activity will be visible to both theatergoers and passersby. Floor-to-ceiling glass on the ground floor will place the scene shop, metal shop and paint shops on display. Theatergoers gathering in the glass-enclosed lobby for the 250-seat thrust theater will also be visible from the street. Inside, visitors attending a show at the fourth-floor theater will pass classrooms and rehearsal rooms.

Students and faculty will enter the building midblock at Racine, which connects with paths to the heart of the DePaul campus. The school entrance opens into a lobby, lounge and concessions space shared with the public entrance at the corner of Fullerton and Racine. The thrust theater lobby is the "living room" of the building, where theater patrons and students will congregate.

Wide corridors, open lounges and rooftop courtyards will encourage interaction between students and faculty and among theatergoers. An interior courtyard will bring light, views and air to offices and design studios. Rooftop courtyards will be surrounded by all elements of the Theatre School—administration, classroom and rehearsal spaces, public lobbies, faculty spaces, and the script library.

The building is designed for LEED certification. Strategies to reduce energy consumption include fritted glass throughout the building, green roof areas, and daylighting for offices, design studios, and classrooms.



The Theatre School, DePaul University

